

# CSA and CSM

MEC provides CSA & CSM  
for container and RORO vessels




## 2.400 TEU Hybrid ConRo Vessel

Hull No.	DNV Register No.	Ship's Name
2022 / B135	D33798	EL COQUI
2023 / B136	D33798	TAINO

### Container Securing Arrangement Plan

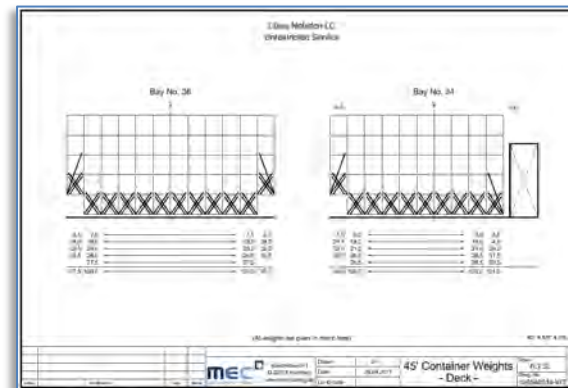
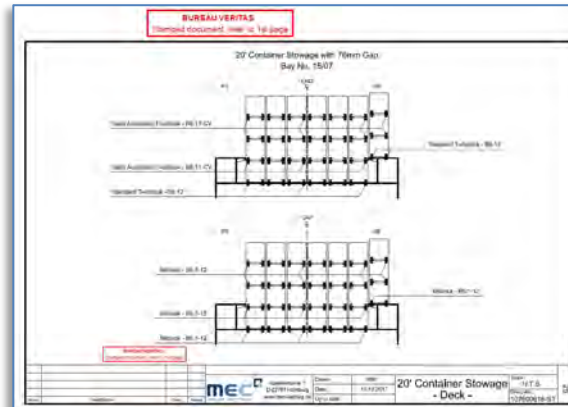
**Class Notation LC for Unrestricted Service and RSCS for Standard- and Individual Routes**  
**Route No. 5: North Atlantic Service**  
**Route No. 29: West Coast – Hawaii Service**  
**Route No. 30: Florida – Puerto Rico Service**

The CSA displays the maximum permissible weights and the maximum number of containers. By reducing stacked containers an improved weight distribution can be achieved. The maximum permissible stack weight on hatch covers and the modification of the GM must be observed. A load optimized weight distribution is calculated by means of the onboard loading computer.

**MEC 106540514**  
MEC GmbH Hamburg

Revision E: 10.11.2017

MEC Container Safety Systems GmbH - Kuehnhoefstr. 1 - D-22763 Hamburg - FR. | 49-40 756 026 0 - Fax: +49-40 756 026 50  
 info@mec-loading.de - www.mec-loading.de




## 2.2 SPECIFICATION OF PORTABLE CARGO SECURING DEVICES

Type designation	Manu- facture	Identifi- cation marking	Symbol	SWL (kN)	BL (kN)	PL (kN)	Quan- tity	Certif- icate no.	Sketch no.
Standard Twistlock	MEC	B6.12		Shear: 216 Tension: 250	Shear: 420 Tension: 500	Shear: 273 Tension: 325	172	52647/ A0 BV	1-05-25- N
Semi-Automatic Twistlock	MEC	B6.11-CV		Shear: 216 Tension: 250	Shear: 420 Tension: 500	Shear: 273 Tension: 325	48	44759/ A0/BV	1-05-70- CV20
Automatic Midlock for bottom layer	MEC	B5.1-12		Shear: 216 Tension: 250	Shear: 420 Tension: 500	Shear: 273 Tension: 325	118	52650/ A0/BV	1-05-67
Automatic Midlock	MEC	B5.1-12		Shear: 216 Tension: 250	Shear: 420 Tension: 500	Shear: 273 Tension: 325	328	52650/ A0/BV	1-05-67
Tieback with elephant foot	MEC	B1.20-1070/1500-EP		245	490	319	144	52659/ A0 BV	1-13-00- M-45-C
Lashing Rod, L=2300mm	MEC	B2.35-2380		245	490	319	144	44760/ A0 BV	1-13-35- N-40
10' Flat Rack	MEC	B14.1-20-P					1		1-12-33- 20-P
Lashing Bar 130x114x6 750mm	MEC	B14.1-149					8		1-12-31- XL
Actuator Pad Lock L=1700mm	MEC	B6.8-17					4		1-05-74- A
Actuator Pad Lock L=430mm	MEC	B6.8-43					4		1-05-74- A
Emergency tool	MEC	B1.1-3					10		1-08-73-

**MEC Container Safety Systems GmbH - Kuehnhoefstr. 1 - D-22761 Hamburg**  
 Ph: +49-40-756 026 0 - Fax: +49-40-756 026 50  
 info@mec-loading.de - www.mec-loading.de